



Bobcat[®]

One Tough Animal.

ELECTRIC FORKLIFTS

7-Series, 4 to 5 ton capacity

🌐 EMEA



ONE TOUGH ANIMAL

OUR MISSION

We empower operators to accomplish more while working in the toughest conditions and tightest situations. When our customers have the will, we provide the way.

BOBCAT'S HISTORY

In 1958, Melroe Manufacturing Company introduced a compact front-end loader that evolved quickly into the M400, the world's first true skid steer loader. The company soon adopted what became the world-famous 'Bobcat' brand – and its success paved the way for the global compact equipment industry we know today.



YEARS OF EXPERIENCE

In 2021, Bobcat expanded its portfolio by acquiring Doosan Industrial Vehicle. This specialist in material handling equipment constructed its first forklift in 1968 and went on to establish a global presence with 400 dealers in 93 countries.



BOBCAT TODAY

Bobcat is expanding its portfolio with the addition of forklifts and reach trucks for the material handling industry, offering a comprehensive lineup that will meet all your intralogistics needs. Bobcat forklifts and reach trucks are produced in our factory in South Korea, while our premium quality warehouse equipment is made in Germany.



TOUGH, AGILE & SAFE

► READY TO GIVE YOUR BUSINESS A LIFT

Offering a dual traction motor, Curtis controller, and responsive acceleration, our forklifts are designed to optimize performance. And their dust and water resistance, oil-cooled disc brakes, and range of convenience options provide all-day comfort and dependability.



Tool-less removable side panel, and wide open hood cover with locking-type gas spring, offer easy access to the main components

Excellent visibility through the mast for safer and more efficient work sites
P. 7

Durable frame and mast for safer operation when carrying loads

Standard fitted weight indicator to prevent forklift overloading

Customizable operator compartment with your preferred controls (fingertip or levers)



Good roof visibility for enhanced operator vision while lifting

Improved dust and water resistance prevents downtime and increases productivity

Premium adjustable seat and steering column for maximum comfort during long shifts
P. 11

Side battery removal for multi-shift operations
P. 11

Oil-cooled disc brakes for maximum productivity and uptime
P. 7

Reduced steering radius for greater maneuverability
P. 7



► OUTSTANDING PRODUCTIVITY

Experience outstanding driving performance with a compact turning radius, excellent visibility, and a powerful motor system, enhancing overall productivity.
P. 6-7



► ALL-DAY COMFORT

Enjoy the ergonomically designed adjustable steering and seats with optional fingertip control.
P. 8-9



► SAFETY IN EVERY MOVE

This series comes equipped with Anti-Rollback, Turtle Mode, and curve speed control. These features prevent potential hazards, providing a secure and safe work environment.
P. 10-11



► MAXIMUM UPTIME

The robust components ensure durability and reliability. All primary components are easily accessible, making maintenance simple and efficient.
P. 12-13



OUTSTANDING PRODUCTIVITY



▶ EXCELLENT VISIBILITY

Thanks to the precisely designed overhead guard with angled roof bars and the excellent visibility through the mast, you have the best view on the task at hand and accomplish more every day.



▶ POWERFUL TRACTION AND PUMP MOTOR SYSTEM

Improve your performance and productivity with the help of a powerful pump motor system, which provides high traction and torque.



▶ EASY SIDE BATTERY REMOVAL

The battery changing system enables fast and easy battery exchange using Side Roll-In/Out or Side Lift In/Out methods. This allows for multi-shift operations to be conducted efficiently.



▶ SMOOTH ACCELERATION & POWERFUL BRAKING

Acceleration starts slowly for safe and precise control. As you drive faster, acceleration increases for better productivity. The ergonomically positioned pedal effortlessly controls the reliable and strong braking power of the oil-cooled disc brakes.

COMFORT & CONTROLS



▶ PREMIUM ADJUSTABLE SEAT

Thanks to the adjustable suspension seat, our forklifts provide exceptional comfort even during long shifts. For additional convenience, you can equip your seat with a heating system to keep operators warm in colder environments.



▶ ADJUSTABLE COLUMN

The ergonomic steering wheel column features step-less adjustment to let operators position it exactly where they need to.



▶ INTUITIVE INSTRUMENT PANEL

Check the truck's performance settings on the go with the simple touch of a button.



▶ CONVENIENCE TRAY

For maximum convenience, a large cup holder, USB port, 12 V power outlet, clipboard holder, and more are placed comfortably within your reach.

▶ EASY ACCESS



The anti-slip step provides a comfortable and safe way to hop on and off for peace of mind.

▶ WELL-PLACED HANDLES



Thanks to the well-placed entry bar and handles, stepping in and out of your vehicle is as quick and comfortable as it gets.

▶ EMERGENCY SWITCH



The emergency switch is always within your reach, ready to be pressed easily in case of emergency.



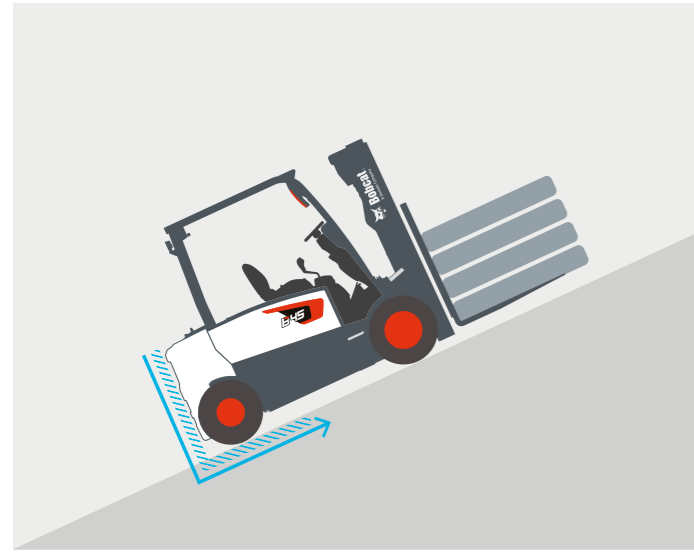
SAFETY IN EVERY MOVE

▶ SAFETY COMES STANDARD

Bobcat forklifts have safety embedded in their DNA. Packed with tons of features that protect your health and your investment, these machines give you peace of mind in every task, every day.

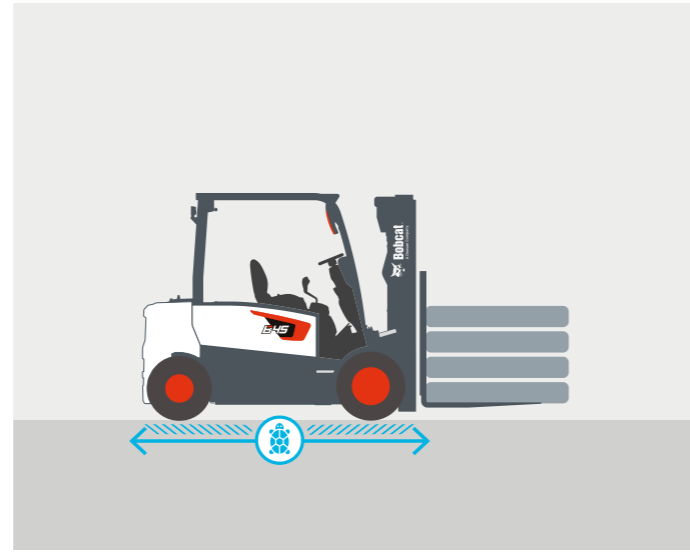
▶ ANTI-ROLL-BACK

The anti-roll-back feature prevents the forklift from rolling back for 5 seconds when the truck is stopped.



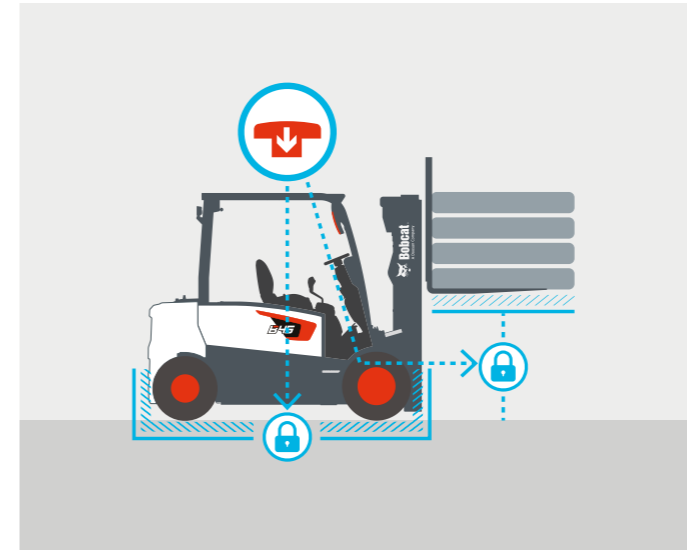
▶ TURTLE MODE

To make warehouse operations more secure, activate Turtle mode to decrease the truck's travel speed to a preset level while maintaining lift speed.



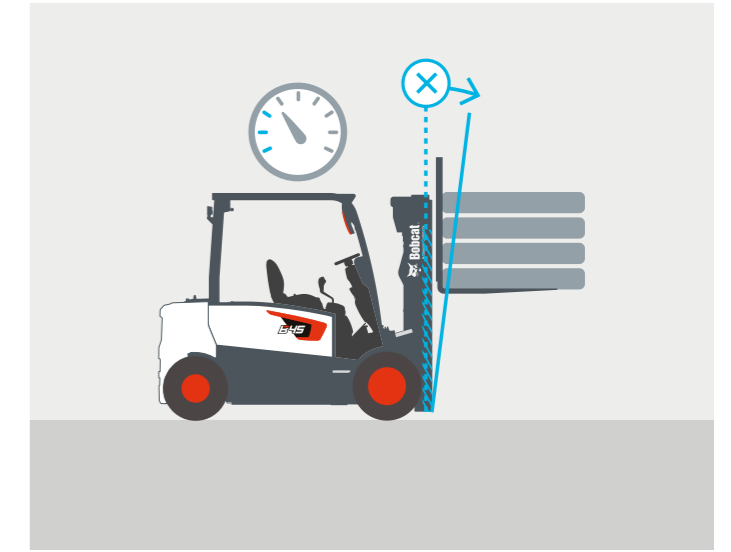
▶ EMERGENCY SWITCH

The emergency switch is always within your reach, ready to be pressed in case of emergency.



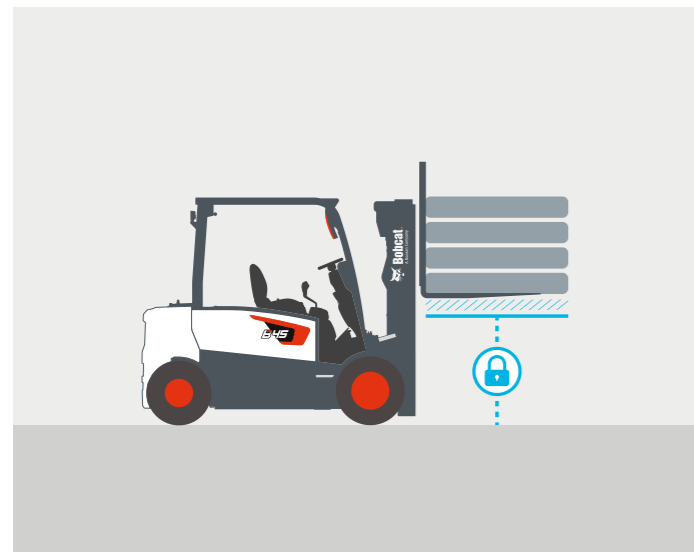
▶ GUARDIAN STABILITY SYSTEM

Our optional Guardian Stability System (GSS) adds an extra level of safety to your business. When the mast is lifted above its primary stage, the travel speed is reduced by 50%, and the forward tilt is limited to a maximum of 2 degrees.



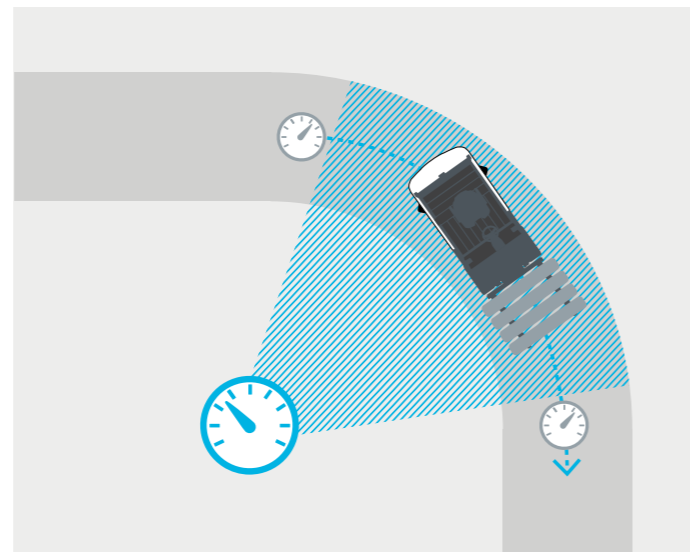
▶ MAST LOWERING INTERLOCK & TILT LOCK

When the operator leaves the truck unattended, the hydraulic locking system prevents unintentional lowering and tilting of the mast. This keeps the truck, load, and work array safe.



▶ AUTOMATIC SPEED CONTROL

The automatic speed control manages travel speeds when turning sharply – automatically slowing the truck down when cornering to reduce the risk of accidents or damage.



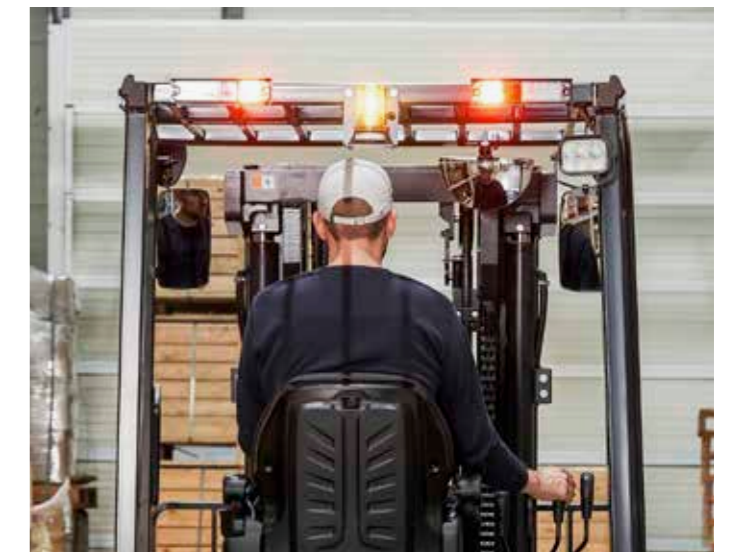
▶ LARGE PANORAMIC MIRROR

Providing great visibility of the rear working area, the large panoramic mirror improves safety and adds to your overall productivity at the same time.



▶ LED LIGHTING SYSTEM

The LED lights illuminate even the darkest corners of your workplace, providing a safe and clear view of your surroundings.



BUILT TO LAST

DESIGNED TO ENDURE

Bobcat 7-Series Electric Forklifts are built tough to provide maximum uptime and dependability, thanks to the reliable AC controller, dust- & water-resistant parts, and an additional drive motor cover.



THERE'S NO TIME FOR DOWNTIME. STAND UP TO EVERY TASK THAT COMES YOUR WAY, DAY AFTER DAY.

2 YEAR WARRANTY

WARRANTY

Bobcat develops every machine to the highest standards of quality and durability. That's why our standard warranty provides 24 months or 2 000 operating hours (whichever occurs first) of coverage.



PROTECTION PLUS EXTENDED WARRANTY

Enjoy total peace of mind with Protection Plus extended warranty. Providing the same level of protection as the standard warranty, Protection Plus also reflects different customer needs and expectations by offering a choice of durations and annual operating hours.

EXTENSIVE DEALER NETWORK

You can rely on our network of dealers and service partners who are always ready to help you.

BOBCAT GENUINE PARTS

Quality components delivered to our dealers guarantee that all of our equipment is built to last, withstand the toughest conditions and provide reliable performance.

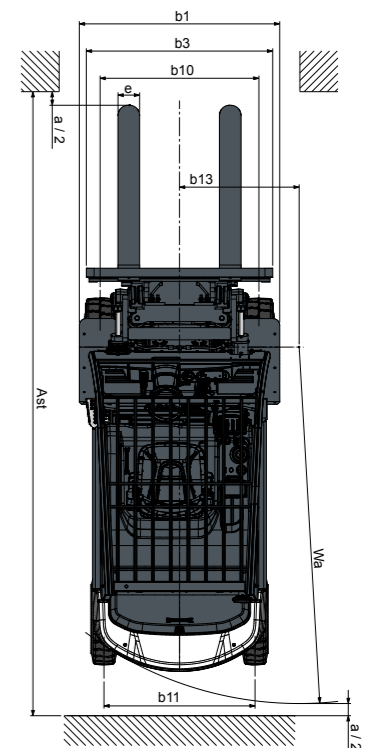
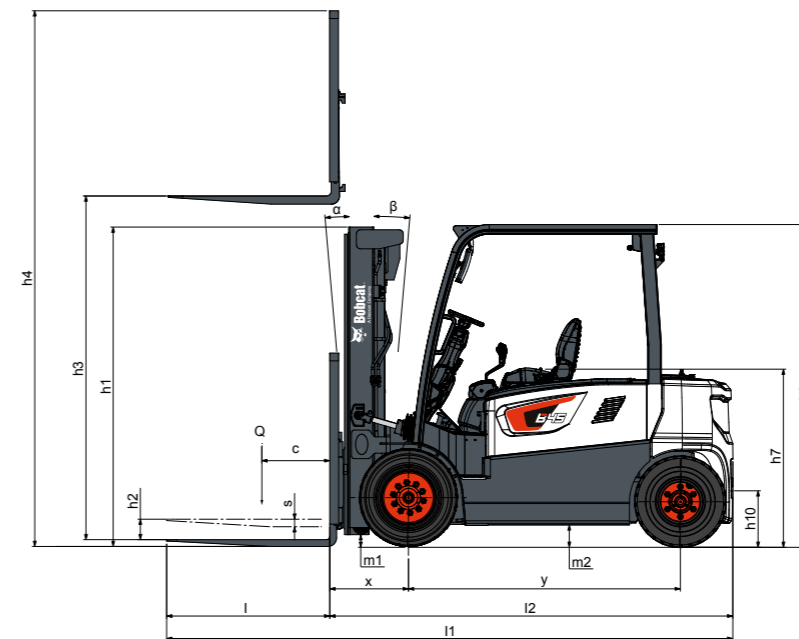
SPECIFICATIONS

TECHNICAL DATA ACCORDING TO VDI 2198					
		B40X-7	B45X-7	B50XC-7	B50X-7
CHARACTERISTICS					
Load capacity/rated load (kg)	Q	4 000	4 500	4 990	5 000
Load center distance (mm)	c	500			
Load distance, center of drive axle to fork (mm)	x	572			
Wheelbase (mm)	y	2 000			
Service weight (with min. weight of battery) (kg)		7 012	7 427	7 734	7 763
Tread width, front (mm)	b11	1 168	1 160		
Tread width, rear (mm)	b12	1 111			
Tilt of mast/fork carriage forward (α) / backward(β) (deg)	α / β	6 / 9			
Height, mast lowered (mm)	h1	2 050 – 3 615		2 050 – 3 410	
Free lift (mm)	h2	160 – 1 540	160 – 1 685		
Lift height (mm)	h23	3 000 – 6 050		3 000 – 6 500	
Height, mast extended (mm)	h4	4 240 – 7 330		4 240 – 7 780	4 390 – 7 930
Height to top of overhead guard (mm)	h6	2 345	2 350		
Seat height/stand height (mm)	h7	1 297	1 303		
Overall length (mm)	l1	4 007		4 037	
Length to face of forks (mm)	l2	2 957		2 987	
Overall width with single tires (mm)	b1	1 470			
Overall width with double tires (mm)		1 735			
Fork carriage ISO 2328. Class/type A, B (mm)		IIIA			IVA
Ground clearance, with load, below mast (mm)	m1	120	130		
Ground clearance, center of wheelbase (mm)	m2	160			
Turning radius (mm)	Wa	2 620		2 645	
Internal turning radius (mm)	b13	877	879		
Travel speed, loaded / unloaded (km/h)		15 / 16			
Lift speed, loaded / unloaded (m/s)		0.35 / 0.47	0.33 / 0.47	0.31 / 0.47	
Lowering speed, loaded / unloaded (m/s)		0.48 / 0.45			
Maximum drawbar pull, loaded / unloaded, 5 minute rating (N)		18 620 / 18 620			
Maximum gradeability, loaded / unloaded, 5 minute rating (%)		17 / 27	16 / 26	15 / 25	
Battery voltage/nominal capacity K5 (V/Ah)		80 / 720			

Specification values quoted in this specification sheet have been rounded. Performance may vary depending on operating conditions. Products and specifications are subject to improvement and change without prior notice.
 (1) Mast dimensions with load backrest refer to a range from the lowest to highest available mast.

STANDARD EQUIPMENT & OPTIONS

STANDARD EQUIPMENT & OPTIONS		STANDARD EQUIPMENT & OPTIONS	
SAFETY & STABILITY		ERGONOMICS	
Oil-cooled disc brakes	✓	Large entry step with anti-slip pattern	✓
LED lights	✓	Large & angled floor plate (leg room) with rubber mat	✓
Emergency stop switch	✓	Rounded design battery hood cover	✓
OSS (Operator Sensing System)	✓	Easy to read instrument panel	✓
Anti-roll-back	✓	Adjustable tilt steering column & easy grip (Ø280 size) steering wheel	✓
Curve speed control	✓	Convenience tray with cup holder, USB port & 12 V jack & clip board	✓
Low battery warning alarm	✓	Hydraulic levers	✓
Seat belt indicator	✓	Fingertip	•
Turtle mode	✓	Steering wheel knob	•
Mast lowering interlock & tilt lock (ISO 3691)	✓	Low overhead guard	•
Guardian Stability System (GSS)	•	Mono pedal	•
Blue rear safety light	•	Directional switch on main control valve	•
Additional rear light	•	Selection of suspension seats (Grammer)	•
Strobe light	•	RELIABILITY	
Hazard switch	•	IP65 rated Curtis controller	✓
Panoramic mirror and/or rear view mirrors	•	Robust frame structure & strong structure overhead guard	✓
Backup alarm	•	Oil-cooled disc brakes	✓
Hydraulic accumulator	•	IP43 rated drive & pump motors	✓
NFC start tag	•	IP54 rated drive & pump motors	•
PRODUCTIVITY		Tilt cylinders bellows	•
Full AC system chassis	✓	SERVICEABILITY	
Hydraulic cushioned valve in freelif cylinder (FFL & FFT)	✓	Easy to access controller	✓
Excellent visibility through mast	✓	Wide open battery hood cover	✓
Rounded design counterweight	✓	Tool-less removable side cover	✓
Smooth and responsive acceleration	✓	EasyView: service program	✓
Weight indicator hydraulic sensing type	✓	*This list is based on factory data. Standard or optional can vary for specific countries.	
Autotilt leveling	•	• = option ✓ = standard – = not available	
Battery lift/roll in and out system	•		
Quick couplings	•		



FINANCING OPTIONS

24, 36, OR 48 MONTH FINANCING*

Take advantage of 24, 36 or 48 month financing programs starting from **0% interest** and improve your cashflow.

Ask your dealer for the financing offers available.

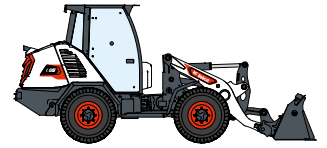
340 MACHINES / 150 ATTACHMENT FAMILIES / 1 TOUGH ANIMAL



**SKID-STEER
LOADERS**



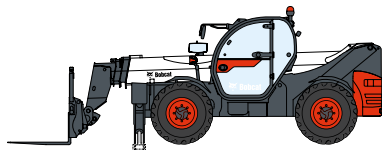
**COMPACT TRACK
LOADERS**



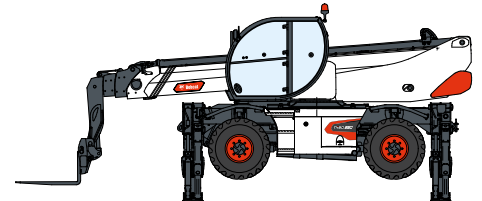
**COMPACT WHEEL
LOADERS**



FORKLIFTS



TELEHANDLERS



ROTARY TELEHANDLERS



**LIGHT COMPACTION
EQUIPMENT**



**COMPACT
EXCAVATORS**



**COMPACT
TRACTORS**



**SMALL ARTICULATED
LOADERS**



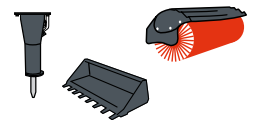
**MINI TRACK
LOADER**



MOWERS



**PORTABLE
POWER**



ATTACHMENTS

DOOSAN

Bobcat is a Doosan Company. Doosan is a global leader in construction equipment, power & water solutions, engines, and engineering proudly serving customers and communities for more than a century. | Bobcat and the Bobcat logo are registered trademarks of Bobcat Company in the United States and various other countries. ©2024 Bobcat Company. All Rights Reserved.



Bobcat®

*Financing options may vary by country and dealer. Always ask your dealer about currently available financing options. Terms and conditions may apply.

Doosan Bobcat EMEA, U Kodelky 1810, 263 12 Dobříš, Czech Republic